



Welcome to our newsletter

This newsletter provides community updates on climate adaptation in the Grampians region



Climate change impacts are already being felt across the region, and successful adaptation requires solutions that are identified, owned and driven locally.

Government agencies and authorities, industry and communities including Traditional Owner corporations; water corporations; and catchment management authorities are already leading the way.

Grampians Region News

Regional Climate Change Adaptation Strategies set for release

The Department of Environment, Land, Water and Planning (DELWP) will soon release Regional Adaptation Strategies detailing priority actions for communities to adapt to the impacts of climate change.

Each DELWP Region has worked with their communities to identify what is necessary to respond to the predicted higher temperatures, altered rainfall patterns, extended fire seasons and increased storm intensity resulting from climate change.

The Grampians Regional Adaptation Strategy (RAS) has been developed over the last 18 months and has been coordinated by specially formed Regional Climate Adaptation Groups. Community and Agency representatives from across the Grampians Region have networked to share the latest information on projected changes to the regions climate. They have explored issues for the community arising from the predicted changes and captured their views on what needs to be put in place to allow communities to respond to these impacts.

A draft RAS was shared with the community earlier this year and updates made based on the feedback provided.

The Grampians RAS identifies 7 goals and 16 outcomes we need to focus on in order to meet the vision:

Grampians Region communities, organisations and natural systems are thriving in a changing climate because we are adapting well together.

Once released, the RAS will be available at [Adapt Grampians](#). It will guide adaptation effort to areas identified by the community as providing the greatest benefit.

An online panel presentation will be held following the announcement of the RAS. Details and weblink to come soon.



Grampians Regional Climate Adaptation Group - Hamish Mines

Hamish has recently joined the Wimmera [Regional Climate Adaptation Group](#).

With family background in Agribusiness in the Western District of Victoria, Hamish's interest expanded into the Wimmera and Agronomy Services in Kaniva.

After a decade of servicing Wimmera farmers, Hamish joined corporate crop protection organisations on the East and West Coast of Australia. He had various technical, marketing and business management roles with Seed Grain & Biotechnology, PlantTech and CropCare (Nufarm). He managed the National Clearfield Production Systems portfolio and was involved in the early business development stages of Nuseed. More recently he was involved in sales and product development in Australia for global fertiliser company, Wengfu Group - China.

He is now teaching at Longerenong College lecturing in agronomy, climate risk management and agribusiness.

Hamish has a strong community connection in the Wimmera, having been past President of Horsham United Football Club, Chair SS Michael and John's Primary School. He also contributes to various recreational committees and community strategies through his past management responsibility with WorkCo, now Skillinvest.

Hamish describes himself as having an addiction to anything outdoors and will be seen regularly along the Wimmera River or throughout the Grampians, either mountain biking, hiking, kayaking, swimming, water-skiing or fly fishing.



Art Is... Future Surface lead artist Hannah French

Despite the challenges of 2020/21 and the re-schedule and then cancellation of the official launch, the Future Surface augmented reality exhibition was displayed around Horsham for community members to enjoy.

Part of the 'Art is...' festival, supported by the Department of Environment, Land, Water and Planning (DELWP), Regional Arts Victoria, Creative Victoria and Horsham Rural City Council, the Future Surface project saw lead artist [Hannah French](#) collaborating with a range of organisations and schools to explore the idea of what a climate affected Wimmera might look like in the future.

Horsham Youth Council also animated a short video about [the importance of recycling soft plastics](#) as part of the Future Surface project.

See some examples of the augmented reality work and [hear Hannah speak about the project here](#).



The Climate Front Line

With more frequent and extreme weather events, damaging bushfires and drought, there is no question that the climate is changing, and the impacts are being felt by humans and nature alike.

The Climate Front Line seeks to stimulate conversation around, and provide alternative perspectives on climate change through challenging values, views and beliefs. For more news visit [Adapt Grampians](#).



Climate Risk Governance Guide

This guide is an introductory resource for directors on climate change risk governance. It provides a plain-language introduction to fundamental climate change concepts, and considers this issue in the context of the non executive directors' role and duties.

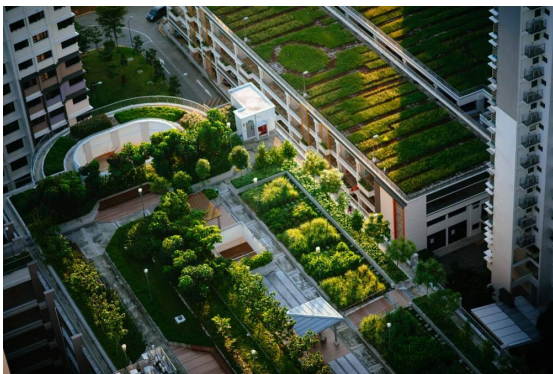
[Read more>](#)



Food waste and climate change

Tackling food waste is vital to reducing carbon emissions. It is estimated that 7.3 million tonnes of food is wasted in Australia each year, costing the economy more than \$20 billion annually. Read the report about the research by Food rescue charity OzHarvest and the Monash Sustainable Development Institute (MSDI).

[Read more>](#)



Adapting communities in QLD

Logan City, south of Brisbane, has been recognised for its urban greening efforts. They increased the city's tree canopy by 12 per cent, going from 41 per cent in 2016 to 53 per cent in 2020.

[Read more >](#)



Solar panels and plants

An ideal scenario in Sydney has allowed researchers to compare the efficiency of solar panels on roofs when surrounded by green plants, or sitting directly on the roof.

[Read more >](#)



